

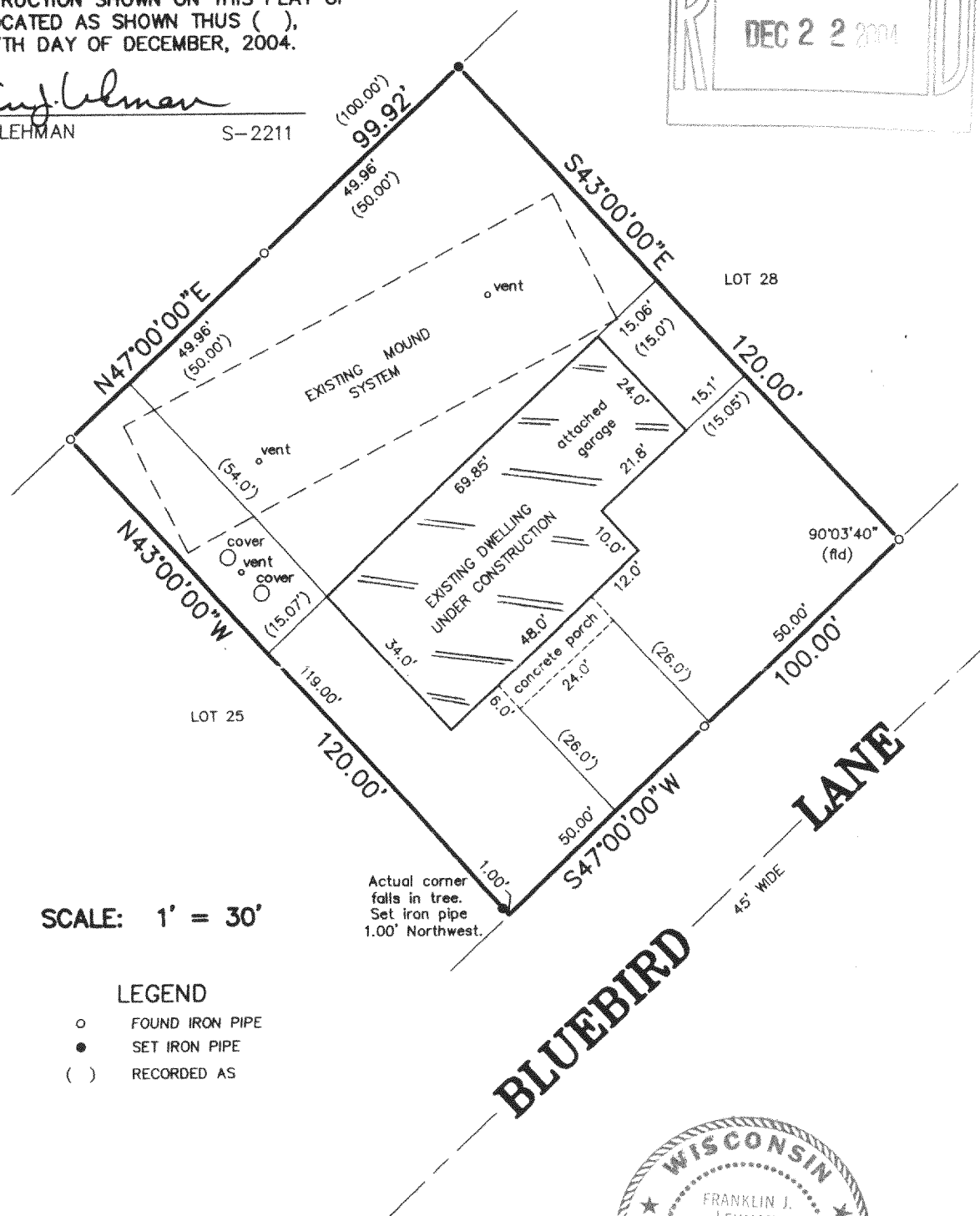
LOTS 26 AND 27, BLOCK 1 OF ROBINSON HILLSIDE, BEING A SUBDIVISION OF A PART OF SECTION 14, TOWN 1 NORTH, RANGE 17 EAST, IN THE TOWN OF LINN, COUNTY OF WALWORTH, AND STATE OF WISCONSIN.

NOTE: DIMENSIONS AND HOUSE TIES ARE TO THE FOUNDATION.

RECEIVED
DEC 22 2004

FRANKLIN J. LEHMAN

S-2211



A circular seal with a rope-like border. The top half of the border contains the word "WISCONSIN" and the bottom half contains "LAND SURVEYOR". Two five-pointed stars are positioned on the left and right sides of the border. In the center, the text reads: "FRANKLIN J. LEHMAN", "S-2211", "BURLINGTON", and "WIS." on four separate lines.

Franklin J. Lehman
FRANKLIN J. LEHMAN

FRANKLIN J. LEHMAN

S-2211

REVISÉ: OCTOBER 19, 2004

AUGUST 24, 2004

DATE _____

6502

JOB NUMBER

IRH-3B

117-2498